

Measuring the Impact of Digital Repositories

Professor Tony Hey

Chief Data Scientist

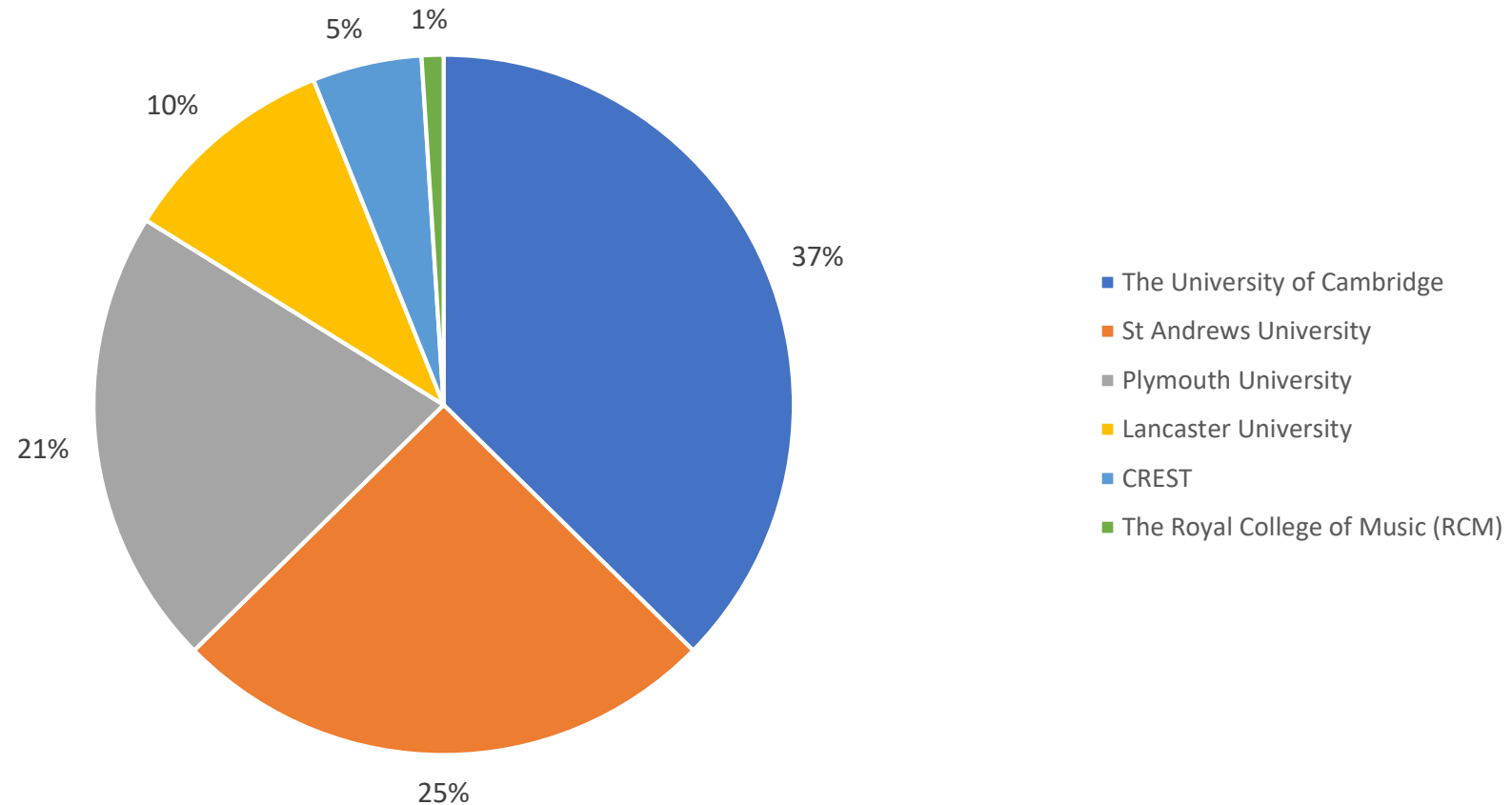
Science and Technology Facilities Council

Rutherford Appleton Laboratory, Harwell Campus

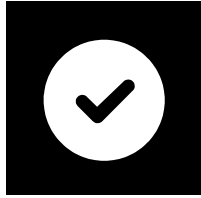
Didcot OX11 0QX, UK

Jisc UK Digital Asset Framework (DAF) survey: Profile of respondents by Institution

- The survey gathered a total of **1,185 responses**.



Conclusions from Jisc DAF survey



Filling a gap

75% of respondents look first to their institution to preserve their data



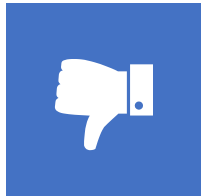
Advocacy

Only 16% of respondents are currently accessing university RDM support services



Public datasets

>70% recognise that research is a public good and should be publicly released



Uptake of RDM

Only 40% of respondents have a Research Data Management plan



Metadata

Only 18% of respondents say they follow established metadata guidelines



Sensitive data

41% of respondents have some form of sensitive data

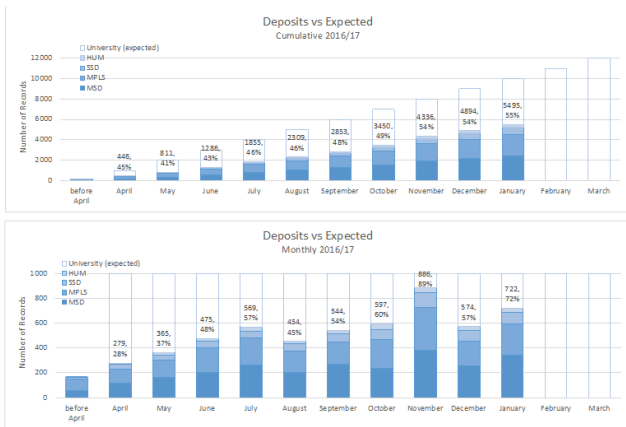
Some quotations from the DAF survey ...

- *“It would be helpful to clarify the rules for storing anonymised data on cloud services. My departmental rules say this is never OK, however this seems to contradict University rules.”*
- *“Support is woeful in the university currently, in particular long-term data archiving is critically required. Most of my non-current data is rotting on CD's and hard-drives.”*
- *“I currently spend about £1,200 pa on data storage from my own salary. I have the highest data needs in my School, and there is no plan in place for storing my data.”*
- *“Please, individualise the support. Workshop are useless, emails with information are useless, brochures are useless, posters are useless.”*

Oxford Research Archive (ORA): Some statistics Feb 2017

Figure 1: Deposits of REF eligible items only vs expected to 31/01/17
(Figures from Symplectic Monitor)

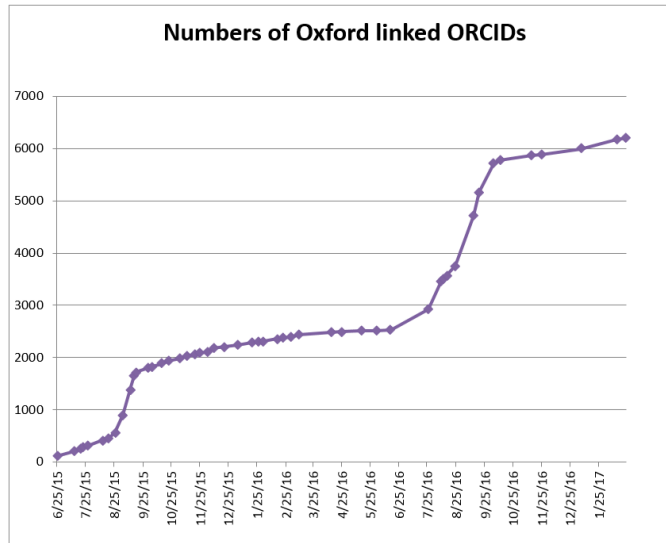
Based on estimate of 12,000 publications p.a. (ie average 1,000 publications per month). Caveat – person filter may not currently be 100% with Division.



Title: Act on Acceptance Engagement Summary Graphs
Source: Deposits of publications in (or expected in) OA policy for the next REF, recorded by current academics in Symplectic Elements until 31 January 2017
Note: Expected outputs based on University-wide estimate of 1,000 per month, pro rata by division based on 2015/16 outputs as recorded on Symplectic

AAM Deposit Compliance

Figure 4: ORCIDs



Researchers with ORCID IDs

