

KEY BRIDGE GLOBAL LLC

Services Overview

<http://keybridgeGlobal.com>





WHITE SPACE PORTALS

Community and Enterprise Editions



DEVELOPER RESOURCES

Web Services, APIs and Open Source SDK



CARRIER RESOURCES

White Space Software, Spectrum Data and Tools

DATA & DATABASES

Wireless Services, Licensed
and Unlicensed transmitters,
Antenna profiles, Tower sites
and more



CLOUD

Registration, Configuration,
Frequency Coordination



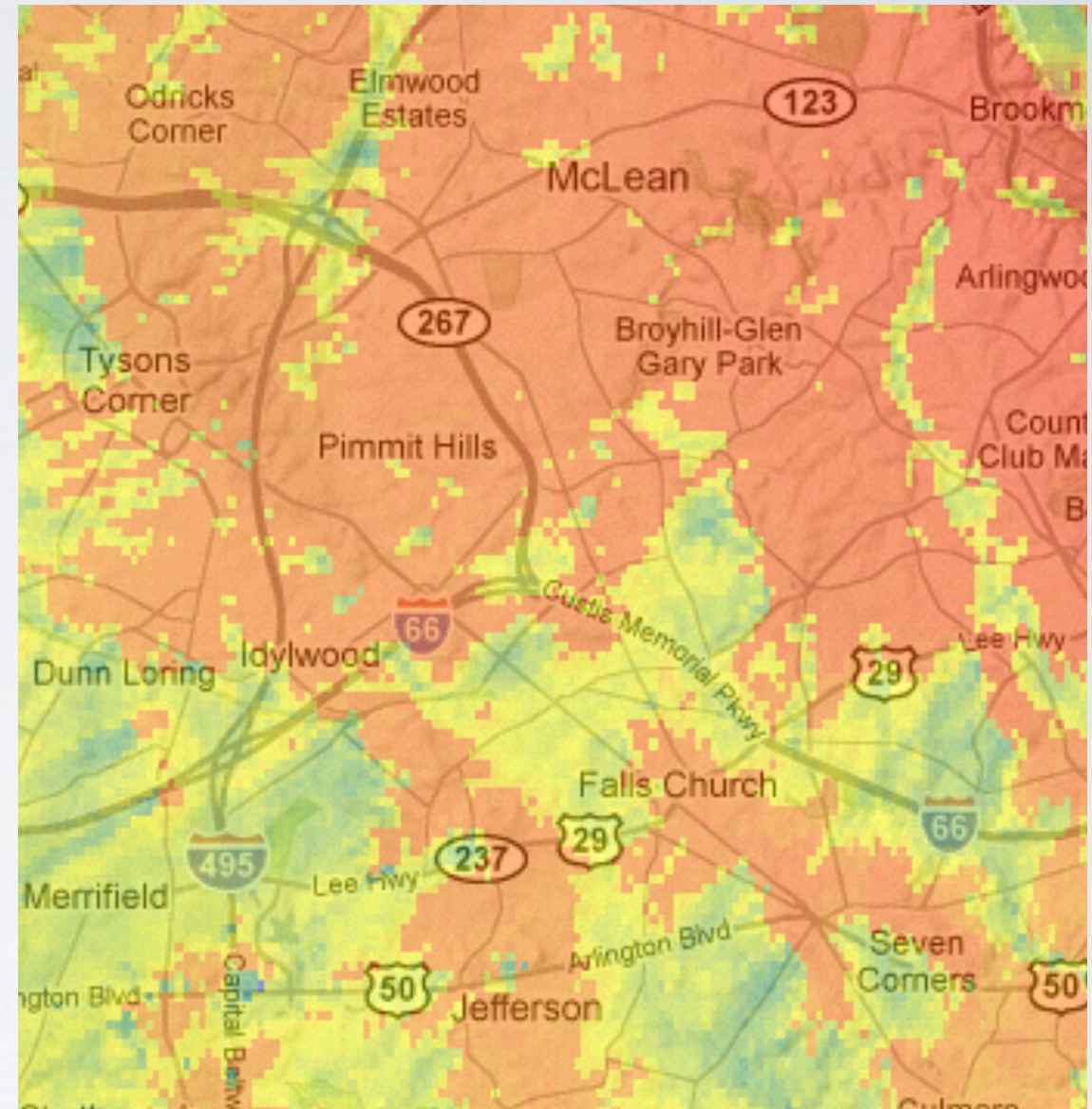
MAPS

Service Points and Coverage
Areas



MODELS

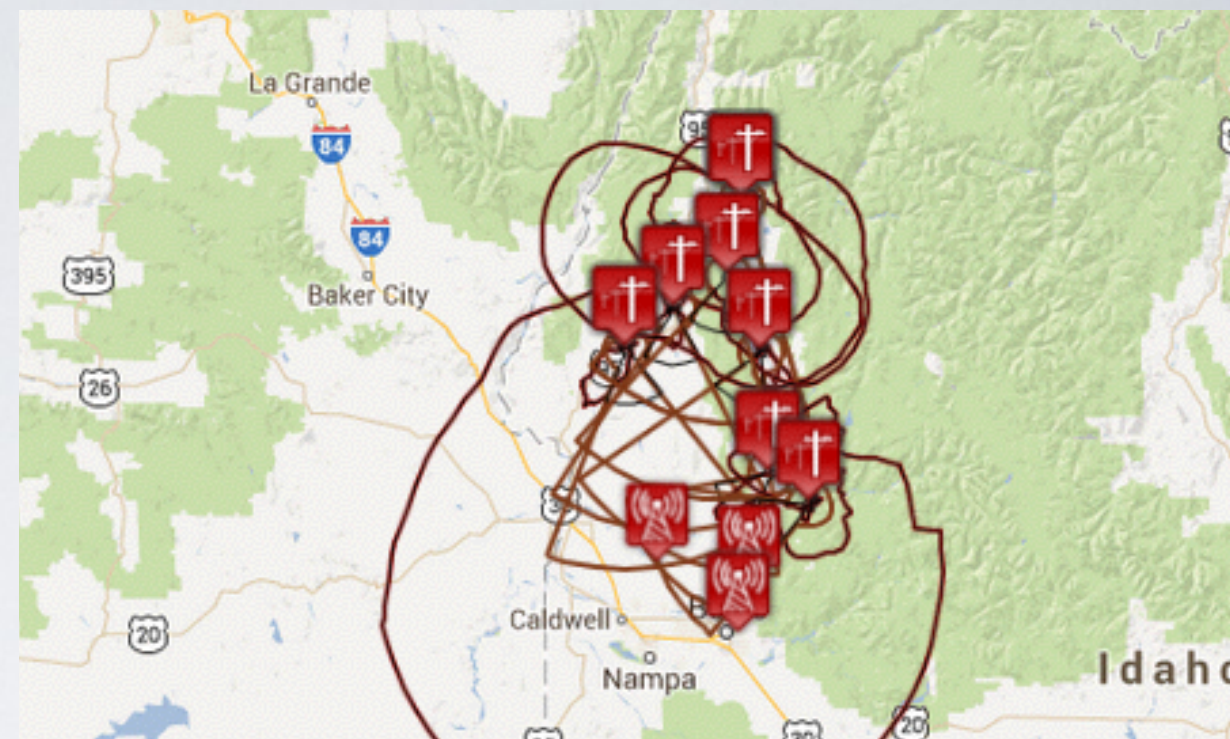
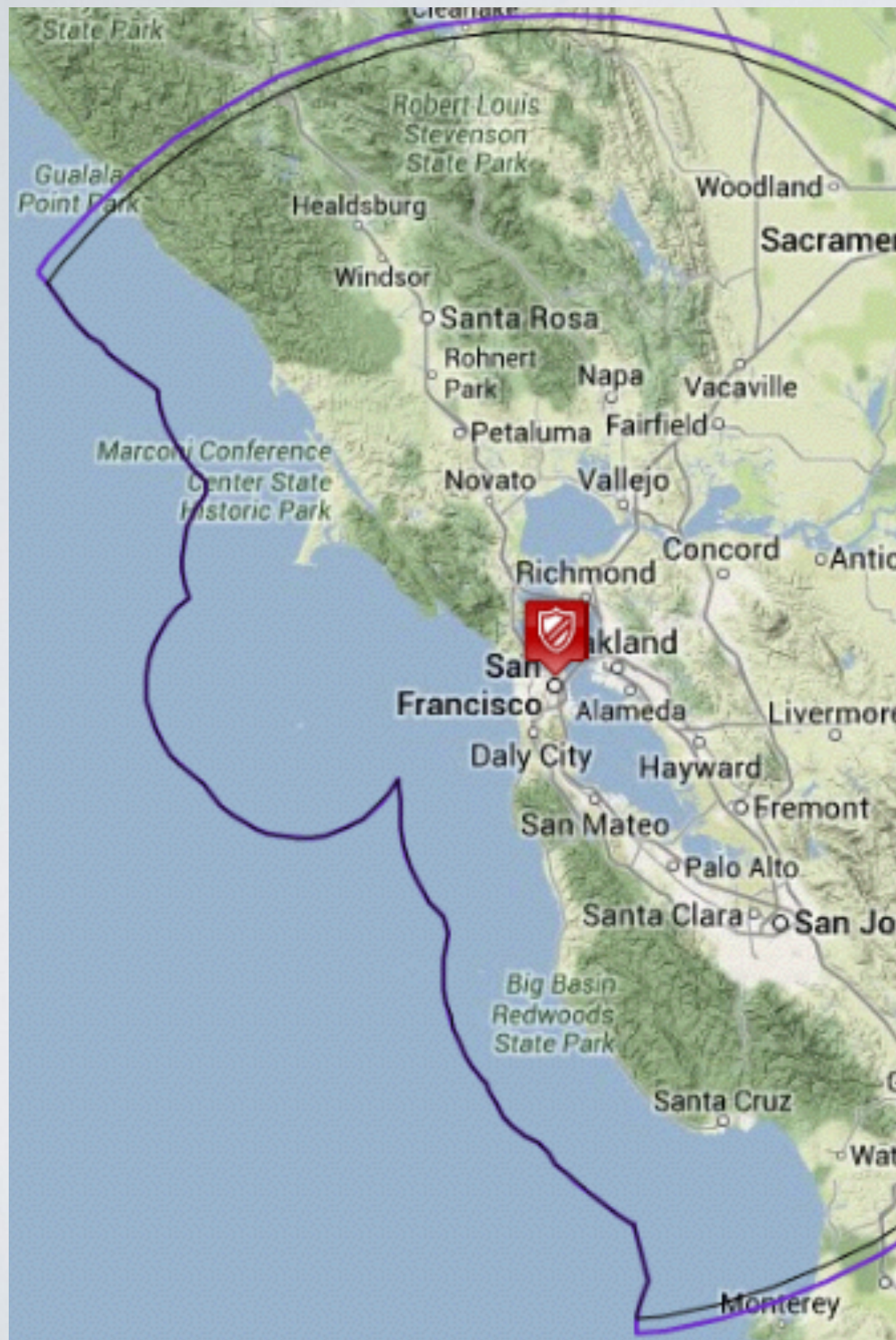
and Path Loss Algorithms



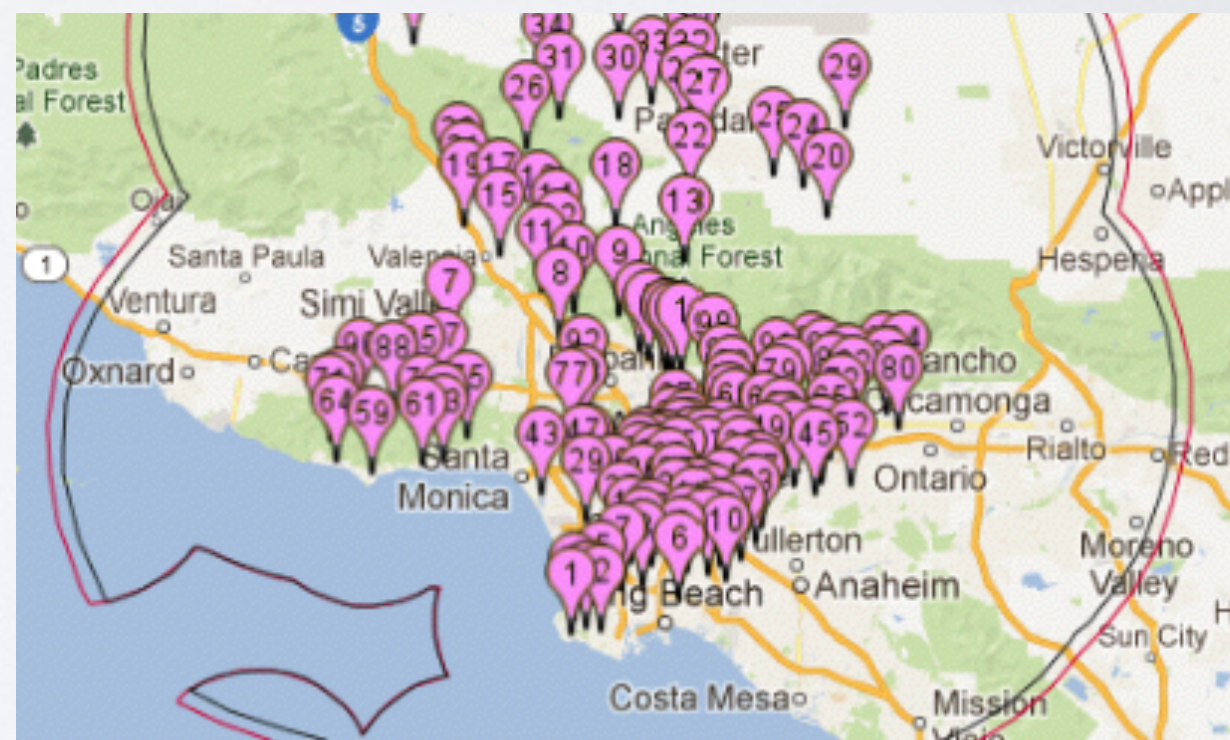


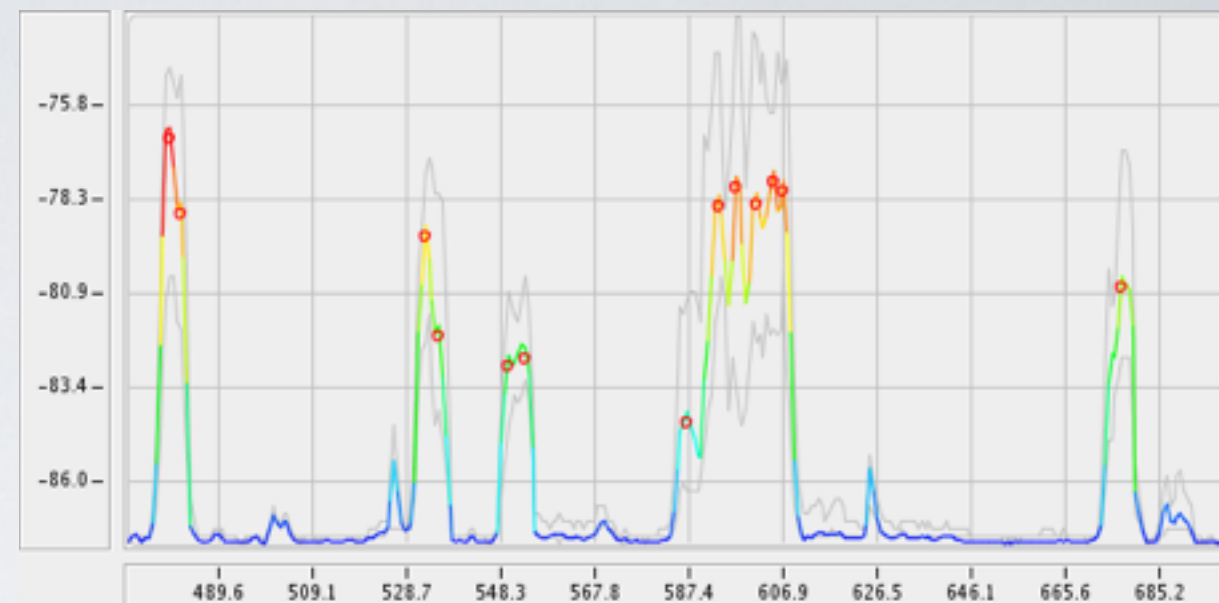
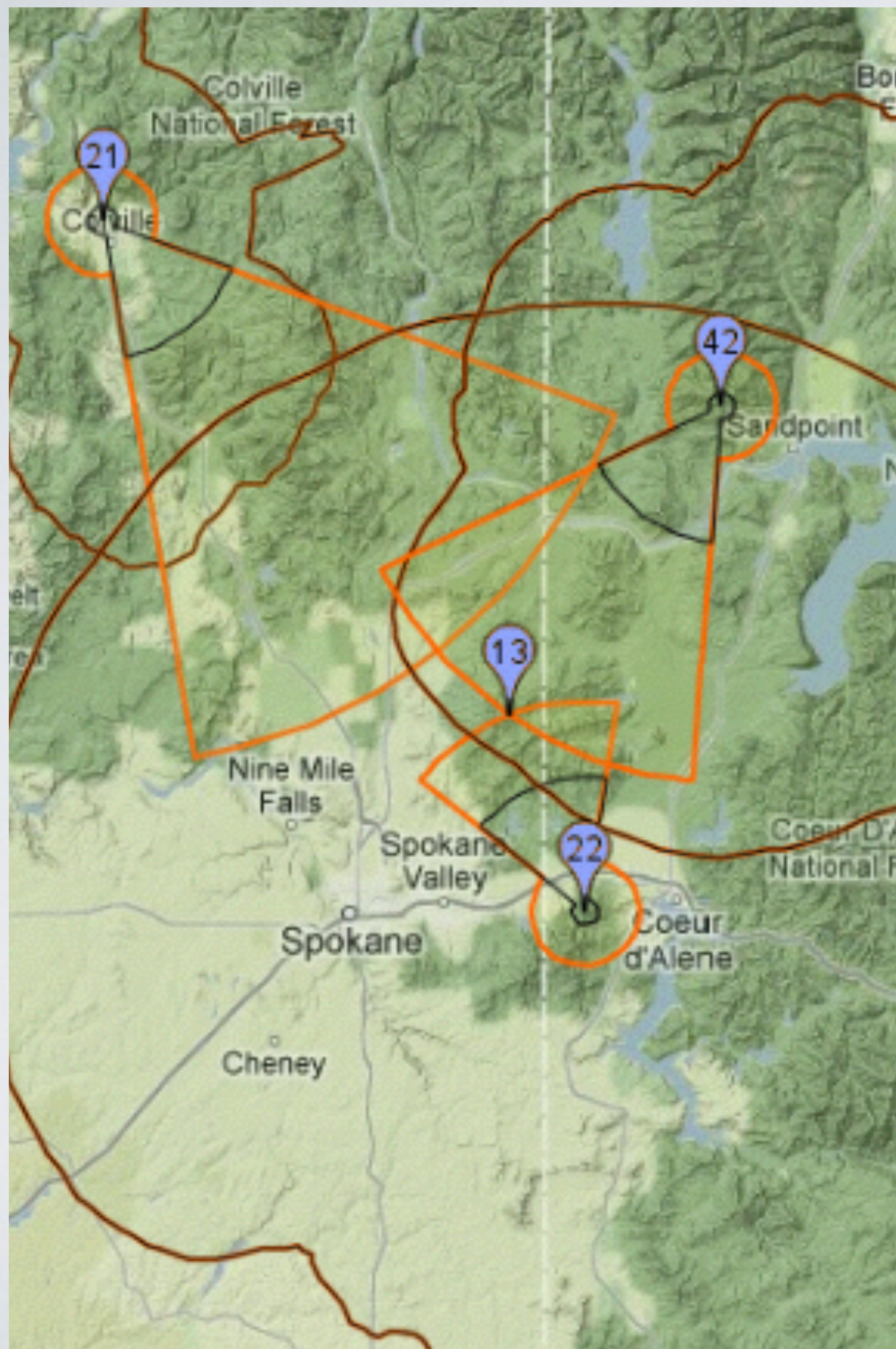
PLAN



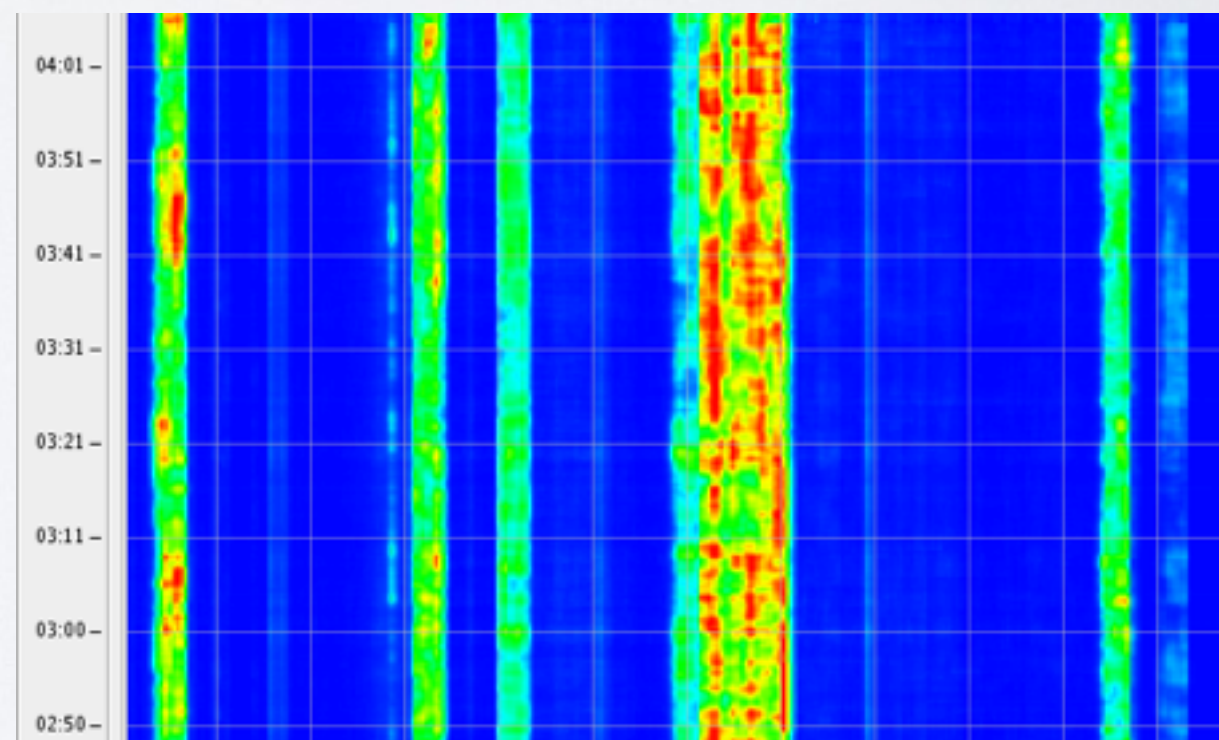


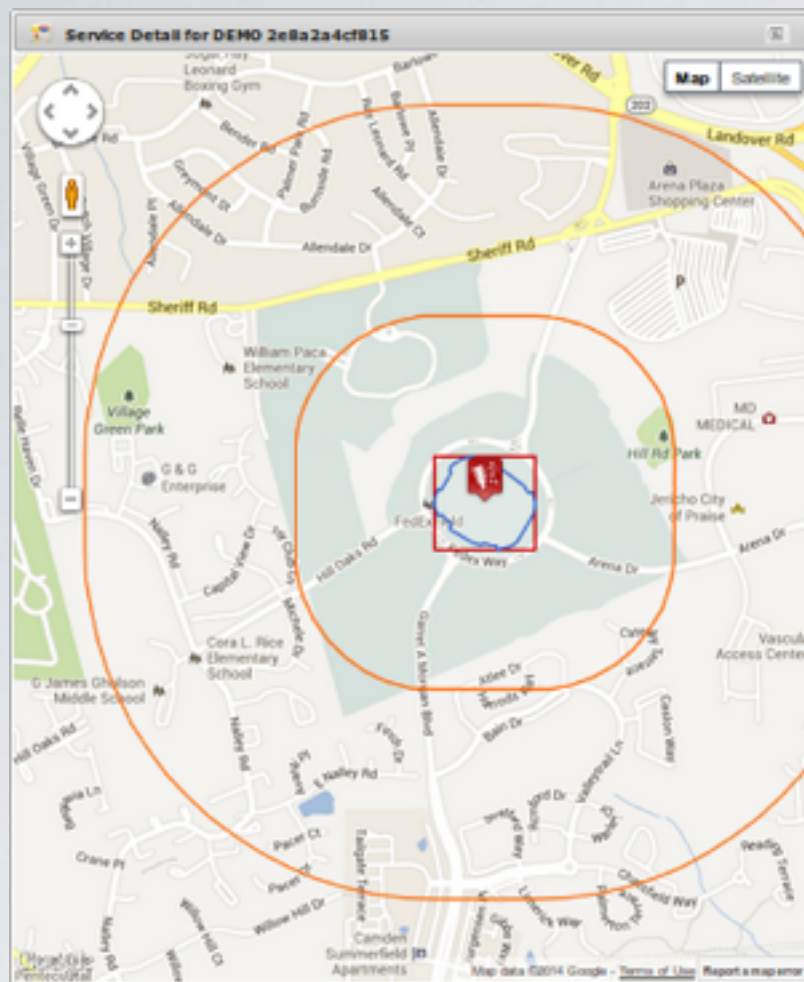
MAP





MONITOR





Service Description

Name
DEMO 2e8a2a4cf815

Service Type
Wireless Microphone (Licensed) 15.712(f)

Event Start
3/3/14 12:00 AM

Event End
3/12/14 11:59 PM

Time Zone
America/New_York

Duration
10 days

Until
3/12/14

Channel(s)
{2, 3, 10, 12, 20, 21, 22, 26, 28, 31, 32, 39, 43, 51}

Registration Details

Status
Active until 3/12/14 11:59 PM

Registrar
KEYBRIDGE

Call Sign
DEMO

Effective
3/3/14 to 3/12/14

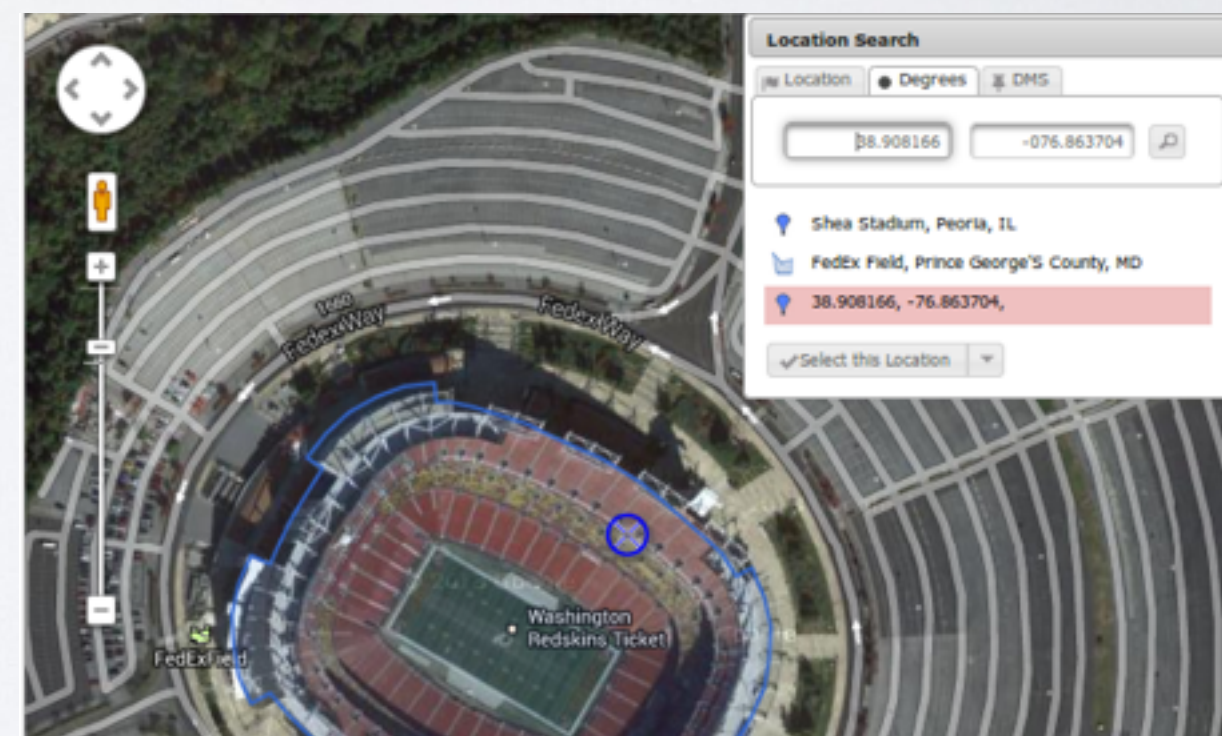
Duration
10 days

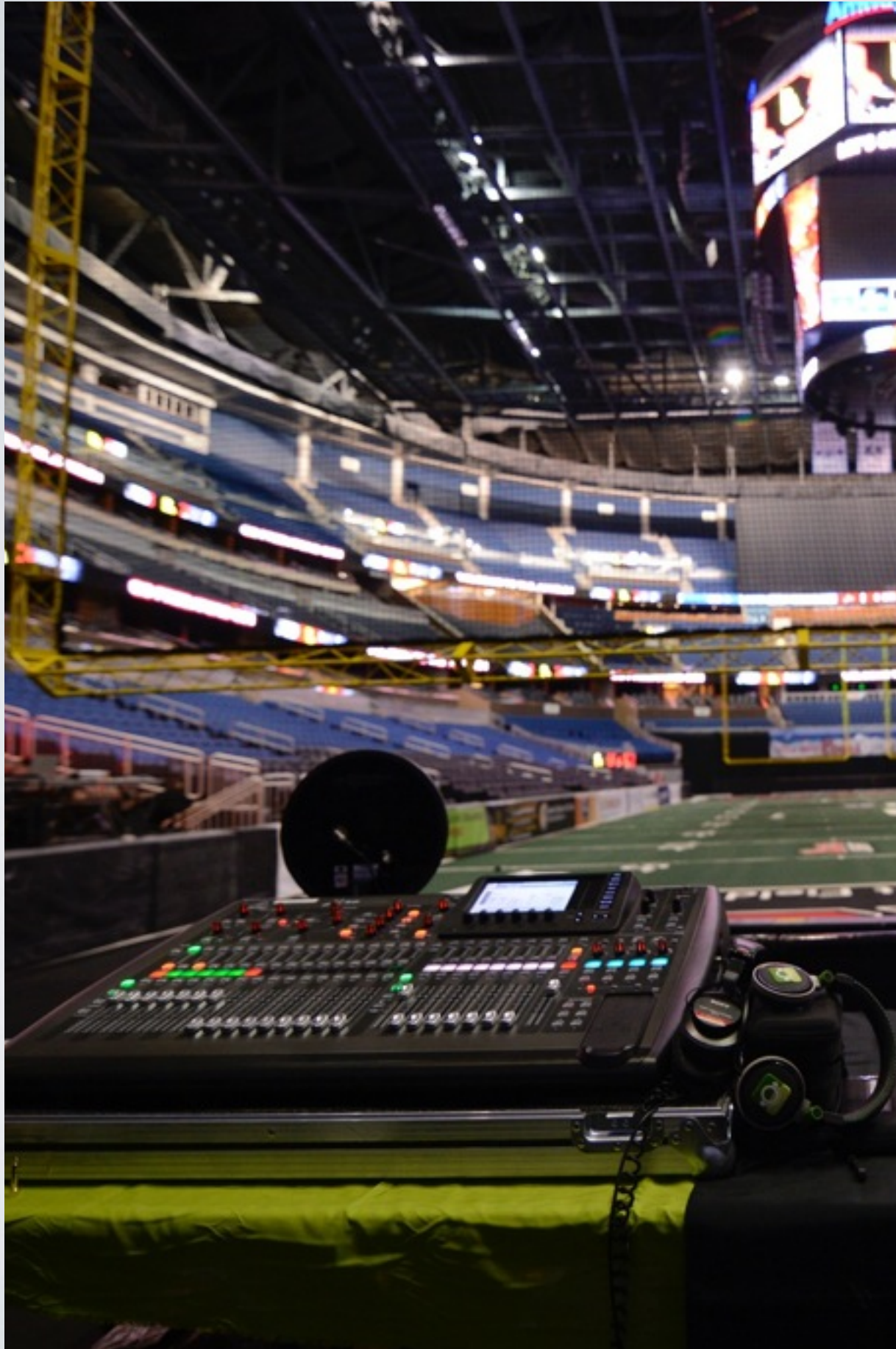
Notes
• The location geometry was simplified to comply with FCC guidance.

UUID
f71a09b-7204-4b0c-aac0-2e8a2a4cf815

Sun	Mon	Tue	Wed	Thu	Fri	Sat
23	24	25	26	27	28	1
2	3	4	5	6	7	8
9	10	11	12	13	14	15
16	17	18	19	20	21	22
23	24	25	26	27	28	29

REGISTER





COORDINATE





SHARE